

## SLIDING MANUAL ENTRANCES: DURA-CARE™ 7000, SINGLE SLIDE TRACKLESS

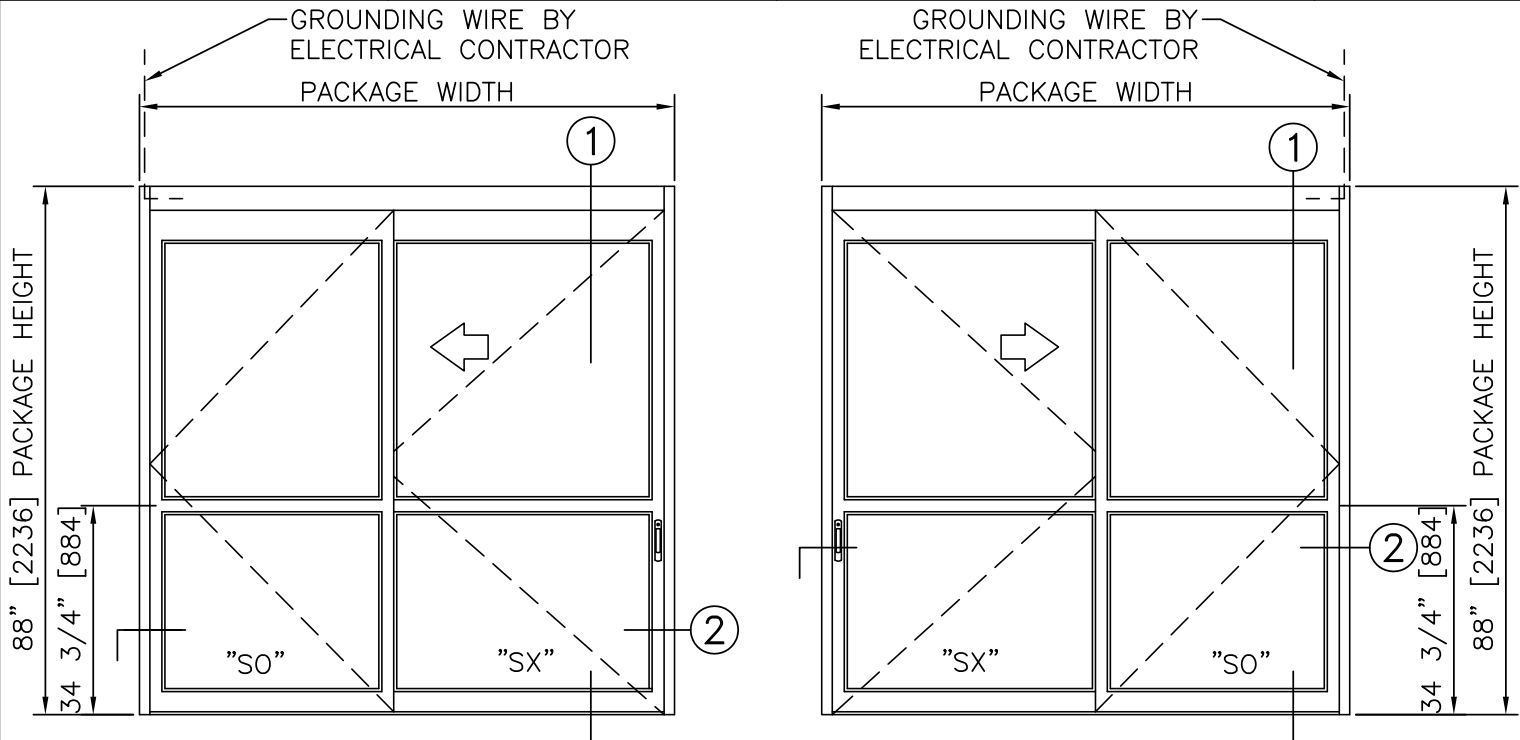
### 3.04 – SINGLE SLIDE TRACKLESS

- 3.04.01 – SINGLE SLIDE RIGHT HAND TRACKLESS
- 3.04.02 – SINGLE SLIDE LEFT HAND TRACKLESS
- 3.04.03 – SINGLE SLIDE RIGHT HAND TRACKLESS, SMOKE & DRAFT
- 3.04.04 – SINGLE SLIDE LEFT HAND TRACKLESS, SMOKE & DRAFT

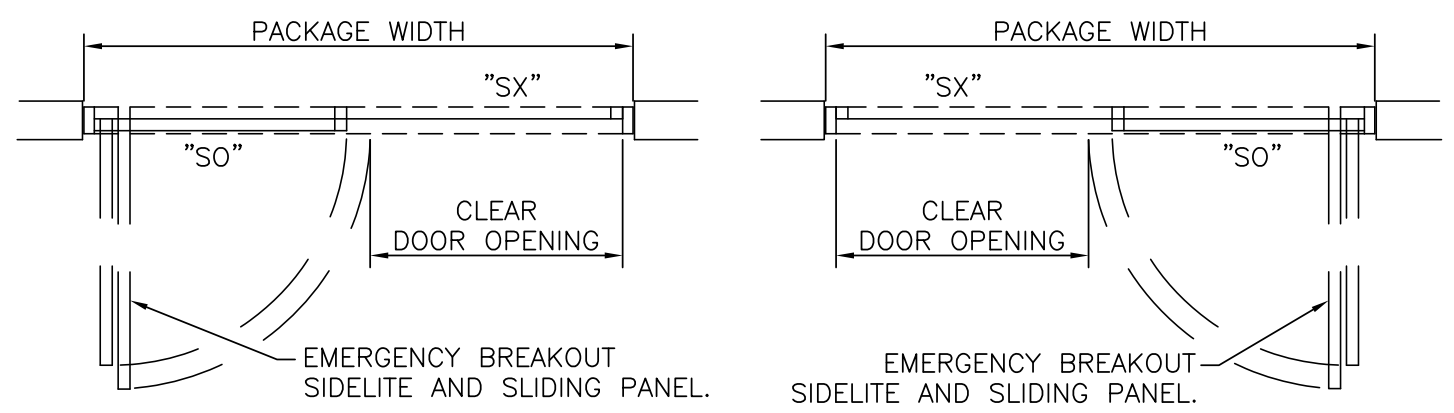


**DURA-CARE™**  
**7000TL**  
**SERIES**

SINGLE SLIDE TRACKLESS	
PROJECT INFORMATION	
PROJECT NAME:	
LOCATION:	
DOOR NUMBER(S):	
DATE:	SHEET: OF



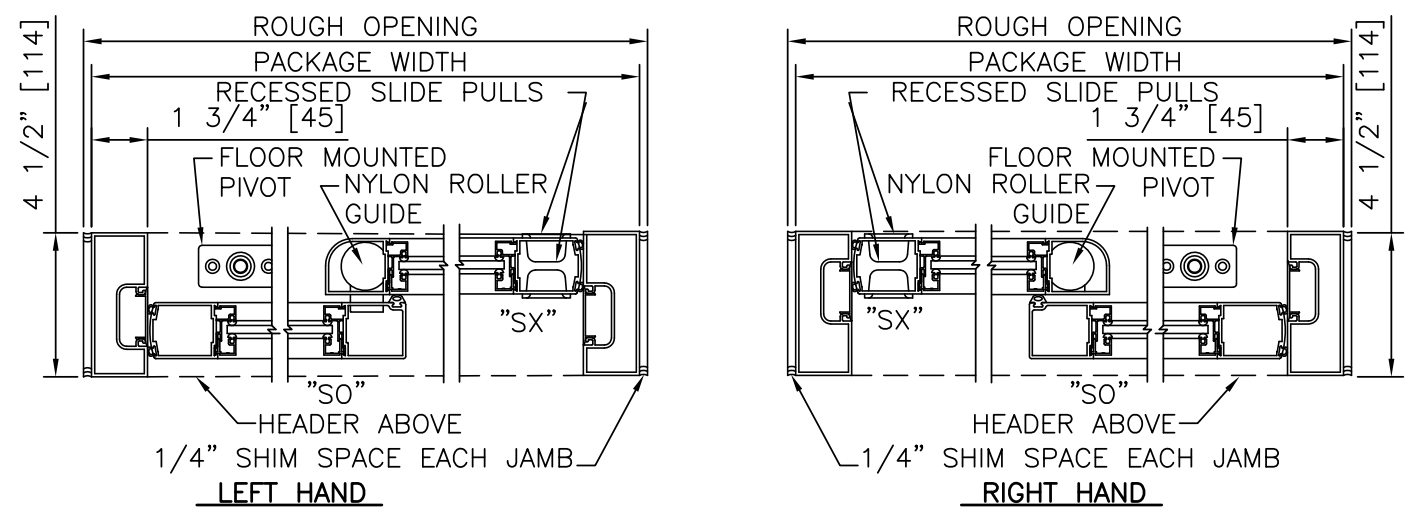
**ELEVATION VIEW**  
LEFT HAND      RIGHT HAND



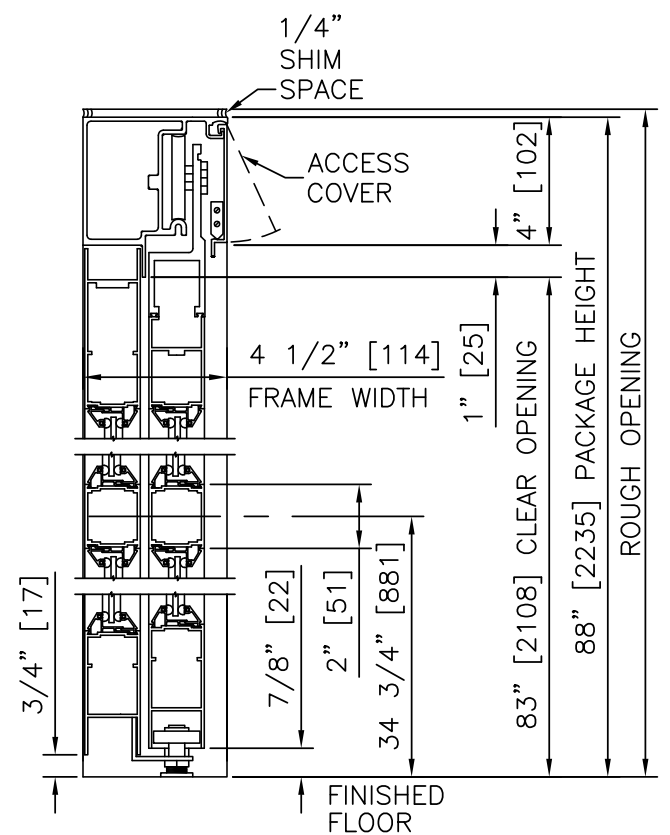
**PLAN VIEW**  
LEFT HAND      RIGHT HAND

**SCALE: 3/8" = 1'-0"**

- NOTES**
- PACKAGE SHALL BE GROUNDED TO BUILDING GROUND SYSTEM. GROUNDING WIRE BY ELECTRICAL CONTRACTOR.
  - ROUGH OPENING SHALL PROVIDE 1/4"[6] SHIM SPACE ON SIDES AND TOP OF PACKAGE.
  - STANDARD PACKAGE EXCLUDES LATCHING OR LOCKING. POSITIVE LATCHING AND LOCKING SYSTEMS AVAILABLE.
  - STANDARD GLAZING STOPS FOR ALL PANELS ARE 1/4"[6]; 5/8"[16] AND 1"[25] AVAILABLE.
  - STANDARD JAMB TUBES SHOWN; 6"[152] AVAILABLE.
  - STANDARD STILES, BOTTOM RAILS AND MUNTINS SHOWN; MEDIUM STILES, BOTTOM RAILS TO 12"[305], AND 4 1/4"[108] MUNTINS AVAILABLE.
  - SLIDING PANEL MUST BE MANUALLY SLID TO FULL OPEN POSITION AND ENGAGE FLOOR MOUNTED HINGE PIN PRIOR TO PANEL BREAKOUT.
  - SEE SPECIFICATIONS FOR ADDITIONAL INFORMATION.



**HORIZONTAL SECTION**  
**SCALE: 2" = 1'-0"**



**LEFT HAND & RIGHT HAND**

**VERTICAL SECTION**  
**SCALE: 2" = 1'-0"**

**PRODUCT OPTIONS**

- FINISH**
- ANODIZED CLEAR CL2
  - ANODIZED DK BRONZE
  - CUSTOM
- LATCHING/LOCKING**
- POSITIVE LATCH
  - 1-POINT
  - 2-POINT
- STILES**
- NARROW
  - MEDIUM
- BOTTOM RAILS**
- STANDARD 4"
  - OPTIONAL 6" 8" 10" 12"
- OTHER OPTIONS**
- SMOKE AND DRAFT CONTROL

**SINGLE SLIDE FORMULAS - NARROW STILE**  
 PACKAGE WIDTH = 2 X CLEAR DOOR OPENING + 17.4"  
 CLEAR DOOR OPENING = 1/2 PACKAGE WIDTH - 8.7"  
 EMERGENCY BREAKOUT WIDTH = PACKAGE WIDTH - 8.9"  
 DOOR PANEL WIDTH (SX) = 1/2 PACKAGE WIDTH + 2.5"  
 DOOR PANEL WIDTH (SO) = 1/2 PACKAGE WIDTH - 3.5"

**SINGLE SLIDE FORMULAS - MEDIUM STILE**  
 PACKAGE WIDTH = 2 X CLEAR DOOR OPENING + 21.8"  
 CLEAR DOOR OPENING = 1/2 PACKAGE WIDTH - 10.9"  
 EMERGENCY BREAKOUT WIDTH = PACKAGE WIDTH - 10.4"  
 DOOR PANEL WIDTH (SX) = 1/2 PACKAGE WIDTH + 3.2"  
 DOOR PANEL WIDTH (SO) = 1/2 PACKAGE WIDTH - 2.8"

TYPICAL PACKAGE DIMENSIONS (NARROW STILE)				
PACKAGE WIDTH	NOMINAL CLEAR DOOR OPENING	"SX" SLIDING DOOR NOMINAL WIDTH	"SO" SIDELITE NOMINAL WIDTH	EMERGENCY BREAKOUT NOM. WIDTH
92"	37.3"	48.5"	42.5"	83.1"
98"	40.3"	51.5"	45.5"	89.1"
104"	43.3"	54.5"	48.5"	95.1"

**DURA-CARE™**  
**7000TL**  
**SERIES**



**DURA-CARE™**  
**7000TL**  
**SERIES**

SINGLE SLIDE RIGHT HAND TRACKLESS

PROJECT INFORMATION

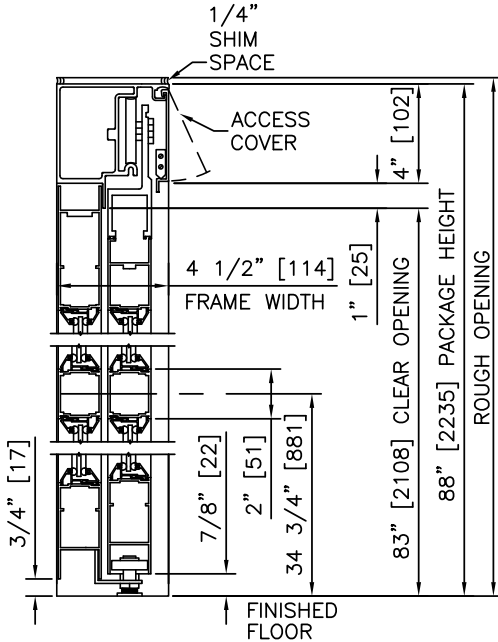
PROJECT NAME:

LOCATION:

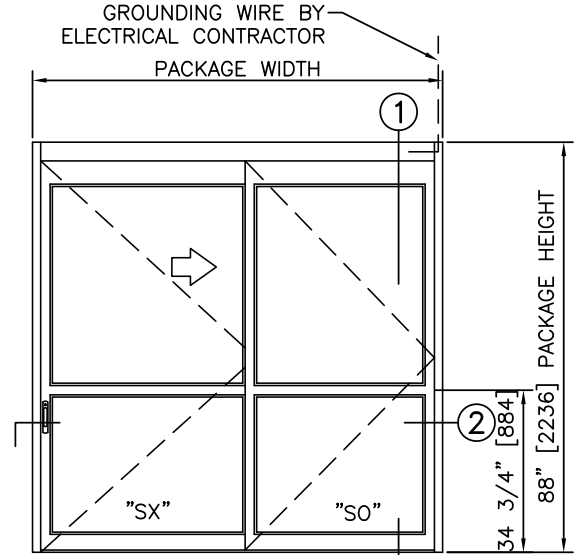
DOOR NUMBER(S):

DATE:

SHEET: OF



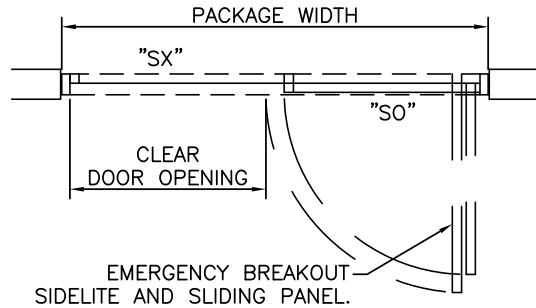
1 VERTICAL SECTION



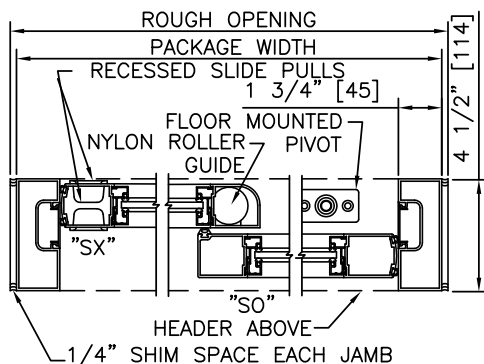
ELEVATION

NOTES

1. PACKAGE SHALL BE GROUNDED TO BUILDING GROUND SYSTEM. GROUNDING WIRE BY ELECTRICAL CONTRACTOR.
2. ROUGH OPENING SHALL PROVIDE 1/4" [6] SHIM SPACE ON SIDES AND TOP OF PACKAGE.
3. STANDARD PACKAGE EXCLUDES LATCHING OR LOCKING. POSITIVE LATCHING AND LOCKING SYSTEMS AVAILABLE.
4. SLIDING PANEL MUST BE MANUALLY SLID TO FULL OPEN POSITION, ENGAGING FLOOR MOUNTED HINGE PIN, PRIOR TO BREAKOUT.
5. SEE SPECIFICATIONS FOR ADDITIONAL INFORMATION.



PLAN



2 HORIZONTAL SECTION

TYPICAL PACKAGE DIMENSIONS (NARROW STILE)				
PACKAGE WIDTH	NOMINAL CLEAR DOOR OPENING	"SX" SLIDING DOOR NOMINAL WIDTH	"SO" SIDELITE NOMINAL WIDTH	EMERGENCY BREAKOUT NOM. WIDTH
92"	37.3"	48.5"	42.5"	83.1"
98"	40.3"	51.5"	45.5"	89.1"
104"	43.3"	54.5"	48.5"	95.1"

**DURA-CARE™**  
**7000TL**  
**SERIES**

SINGLE SLIDE LEFT HAND TRACKLESS

PROJECT INFORMATION

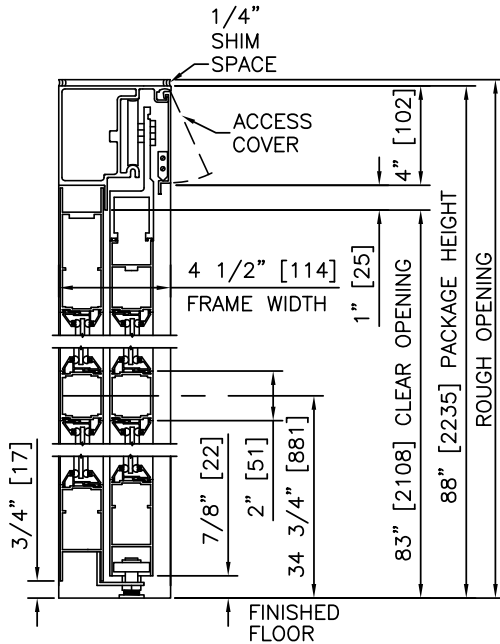
PROJECT NAME:

LOCATION:

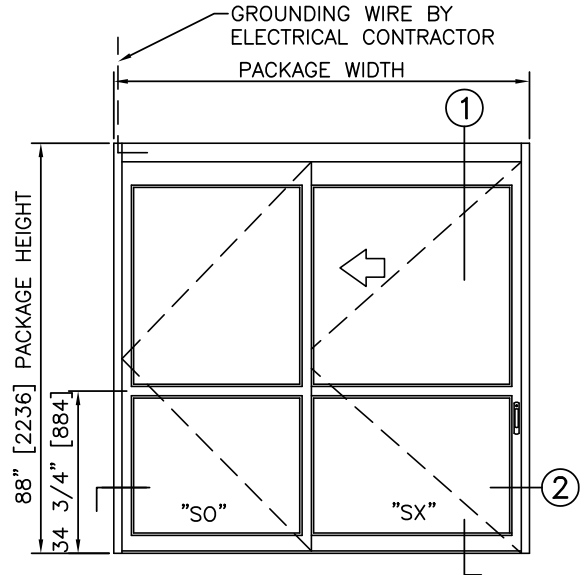
DOOR NUMBER(S):

DATE:

SHEET: OF



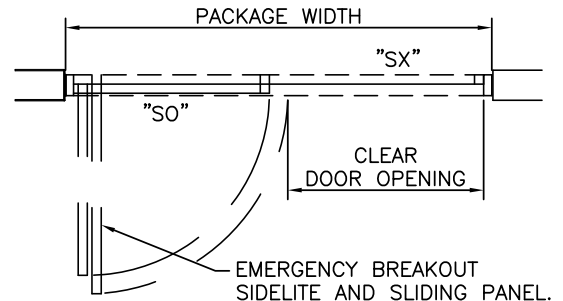
① VERTICAL SECTION



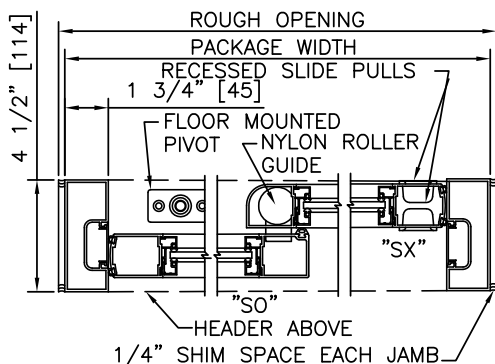
ELEVATION

NOTES

1. PACKAGE SHALL BE GROUNDED TO BUILDING GROUND SYSTEM. GROUNDING WIRE BY ELECTRICAL CONTRACTOR.
2. ROUGH OPENING SHALL PROVIDE 1/4"[6] SHIM SPACE ON SIDES AND TOP OF PACKAGE.
3. STANDARD PACKAGE EXCLUDES LATCHING OR LOCKING. POSITIVE LATCHING AND LOCKING SYSTEMS AVAILABLE.
4. SLIDING PANEL MUST BE MANUALLY SLID TO FULL OPEN POSITION, ENGAGING FLOOR MOUNTED HINGE PIN, PRIOR TO BREAKOUT.
5. SEE SPECIFICATIONS FOR ADDITIONAL INFORMATION.



PLAN



② HORIZONTAL SECTION

TYPICAL PACKAGE DIMENSIONS (NARROW STILE)				
PACKAGE WIDTH	NOMINAL CLEAR DOOR OPENING	"SX" SLIDING DOOR NOMINAL WIDTH	"SO" SIDELITE NOMINAL WIDTH	EMERGENCY BREAKOUT NOM. WIDTH
92"	37.3"	48.5"	42.5"	83.1"
98"	40.3"	51.5"	45.5"	89.1"
104"	43.3"	54.5"	48.5"	95.1"

**DURA-CARE™**  
**7000TL**  
**SERIES**

SINGLE SLIDE RIGHT HAND TRACKLESS, SMOKE & DRAFT

PROJECT INFORMATION

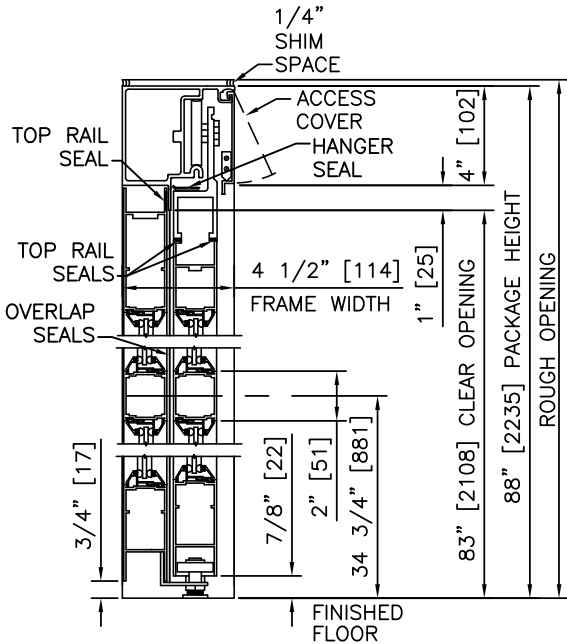
PROJECT NAME:

LOCATION:

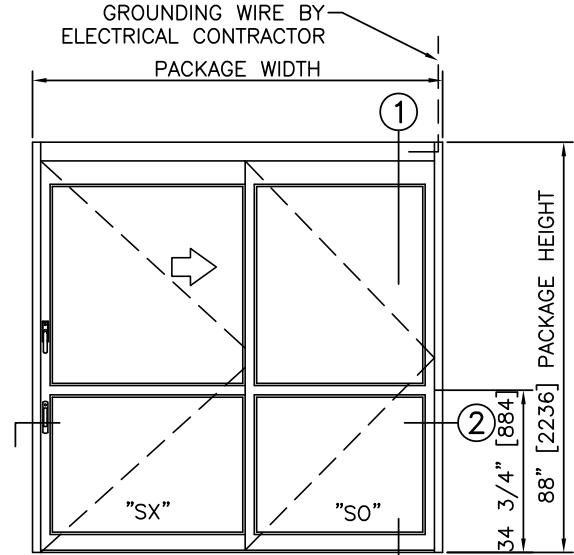
DOOR NUMBER(S):

DATE:

SHEET: OF



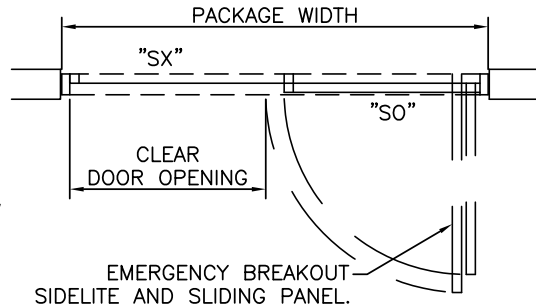
1 VERTICAL SECTION



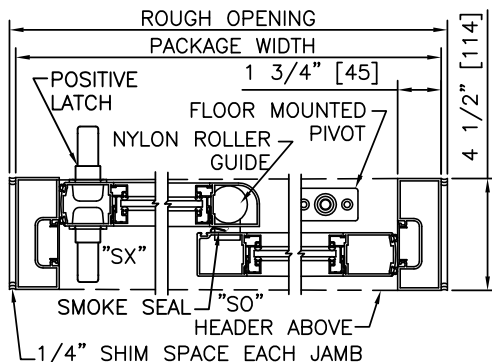
ELEVATION

NOTES

1. PACKAGE SHALL BE GROUNDED TO BUILDING GROUND SYSTEM. GROUNDING WIRE BY ELECTRICAL CONTRACTOR.
2. ROUGH OPENING SHALL PROVIDE 1/4"[6] SHIM SPACE ON SIDES AND TOP OF PACKAGE.
3. STANDARD PACKAGE EXCLUDES LATCHING OR LOCKING. POSITIVE LATCHING AND LOCKING SYSTEMS AVAILABLE.
4. SLIDING PANEL MUST BE MANUALLY SLID TO FULL OPEN POSITION, ENGAGING FLOOR MOUNTED HINGE PIN, PRIOR TO BREAKOUT.
5. PRODUCT IS CERTIFIED AS AN EFFECTIVE BARRIER AGAINST THE PASSAGE OF SMOKE IN ACCORDANCE WITH UL1784
6. SEE SPECIFICATIONS FOR ADDITIONAL INFORMATION.



PLAN



2 HORIZONTAL SECTION

TYPICAL PACKAGE DIMENSIONS (NARROW STILE)				
PACKAGE WIDTH	NOMINAL CLEAR DOOR OPENING	"SX" SLIDING DOOR NOMINAL WIDTH	"SO" SIDELITE NOMINAL WIDTH	EMERGENCY BREAKOUT NOM. WIDTH
92"	37.3"	48.5"	42.5"	83.1"
98"	40.3"	51.5"	45.5"	89.1"
104"	43.3"	54.5"	48.5"	95.1"

**DURA-CARE™**  
**7000TL**  
**SERIES**

SINGLE SLIDE LEFT HAND TRACKLESS, SMOKE & DRAFT

PROJECT INFORMATION

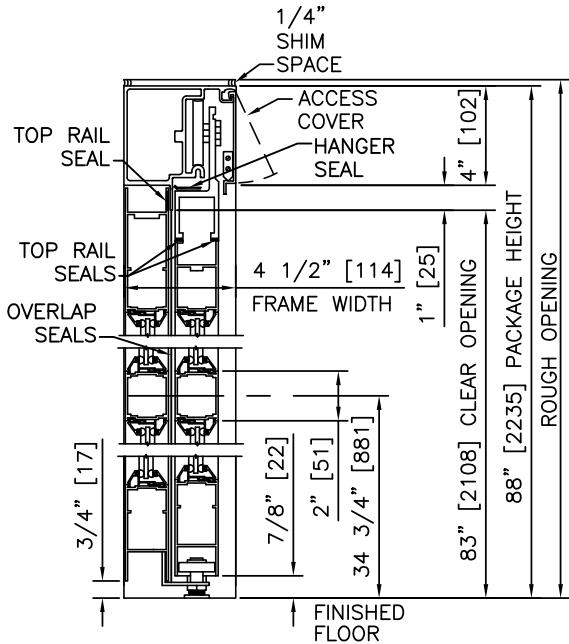
PROJECT NAME:

LOCATION:

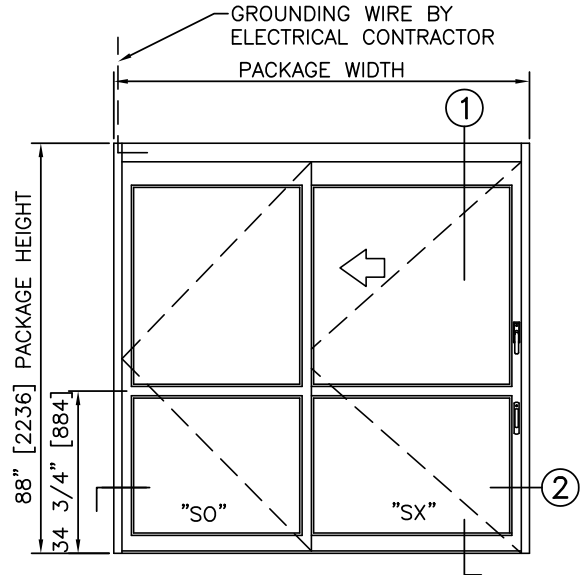
DOOR NUMBER(S):

DATE:

SHEET: OF



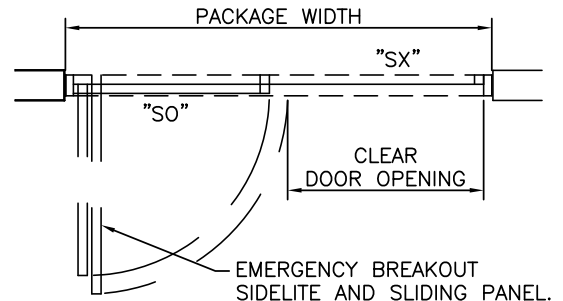
1 VERTICAL SECTION



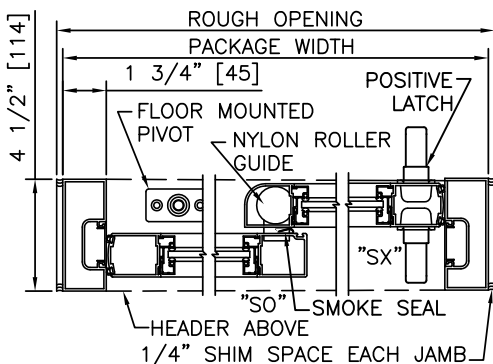
ELEVATION

NOTES

1. PACKAGE SHALL BE GROUNDED TO BUILDING GROUND SYSTEM. GROUNDING WIRE BY ELECTRICAL CONTRACTOR.
2. ROUGH OPENING SHALL PROVIDE 1/4" [6] SHIM SPACE ON SIDES AND TOP OF PACKAGE.
3. STANDARD PACKAGE EXCLUDES LATCHING OR LOCKING. POSITIVE LATCHING AND LOCKING SYSTEMS AVAILABLE.
4. SLIDING PANEL MUST BE MANUALLY SLID TO FULL OPEN POSITION, ENGAGING FLOOR MOUNTED HINGE PIN, PRIOR TO BREAKOUT.
5. PRODUCT IS CERTIFIED AS AN EFFECTIVE BARRIER AGAINST THE PASSAGE OF SMOKE IN ACCORDANCE WITH UL1784
6. SEE SPECIFICATIONS FOR ADDITIONAL INFORMATION.



PLAN



2 HORIZONTAL SECTION

TYPICAL PACKAGE DIMENSIONS (NARROW STILE)				
PACKAGE WIDTH	NOMINAL CLEAR DOOR OPENING	"SX" SLIDING DOOR NOMINAL WIDTH	"SO" SIDELITE NOMINAL WIDTH	EMERGENCY BREAKOUT NOM. WIDTH
92"	37.3"	48.5"	42.5"	83.1"
98"	40.3"	51.5"	45.5"	89.1"
104"	43.3"	54.5"	48.5"	95.1"