



## **SLIDING AUTOMATIC ENTRANCES: DURA-GLIDE™ 2000, BI-PARTING**

### **1.03 - BI-PARTING WITH OPTIONAL TRANSOM**

- **1.03.01 - Bi-Parting**
- **1.03.02 - Bi-Parting with Transom**
- **1.03.03 - Bi-Parting with Access Control, Surface Applied**
- **1.03.04 - Bi-Parting with Transom and Access Control, Surface Applied**
- **1.03.05 - Bi-Parting with Access Control, Recessed**
- **1.03.06 - Bi-Parting with Transom and Access Control, Recessed**

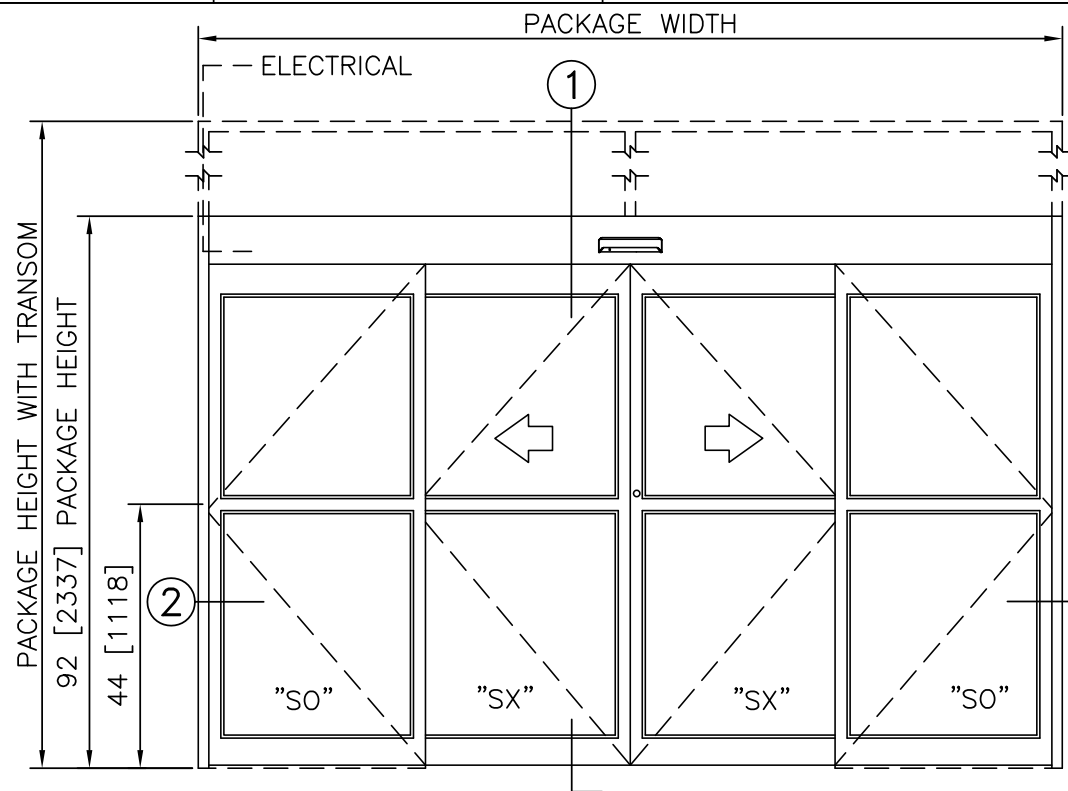
**STANLEY**  
Access Technologies

**DURA-GLIDE**  
**3000**  
**SERIES**

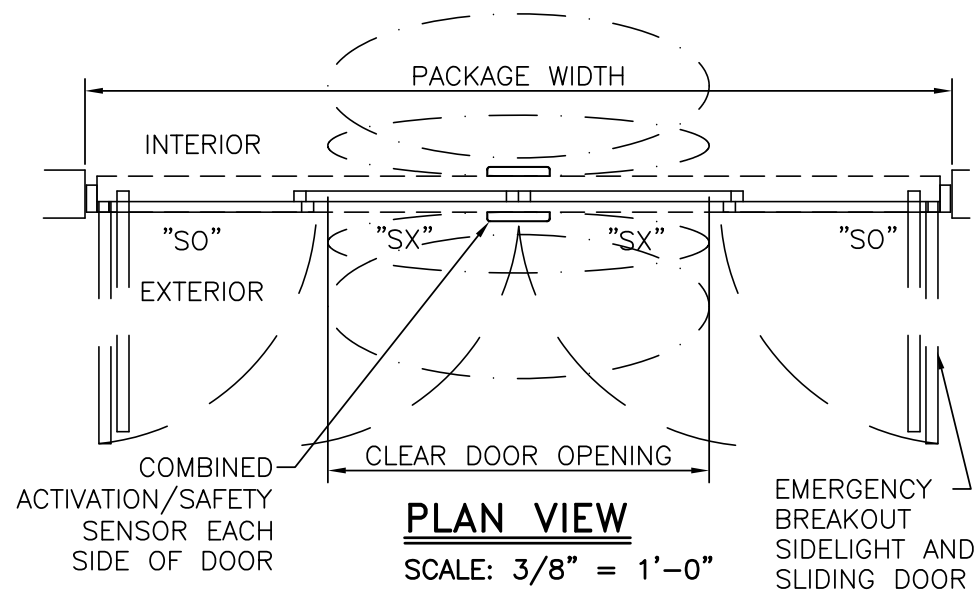
BI-PART WITH OPTIONAL TRANSOM

PROJECT INFORMATION

PROJECT NAME: \_\_\_\_\_  
 LOCATION: \_\_\_\_\_  
 DOOR NUMBER(S): \_\_\_\_\_  
 DATE: \_\_\_\_\_ SHEET: OF \_\_\_\_\_



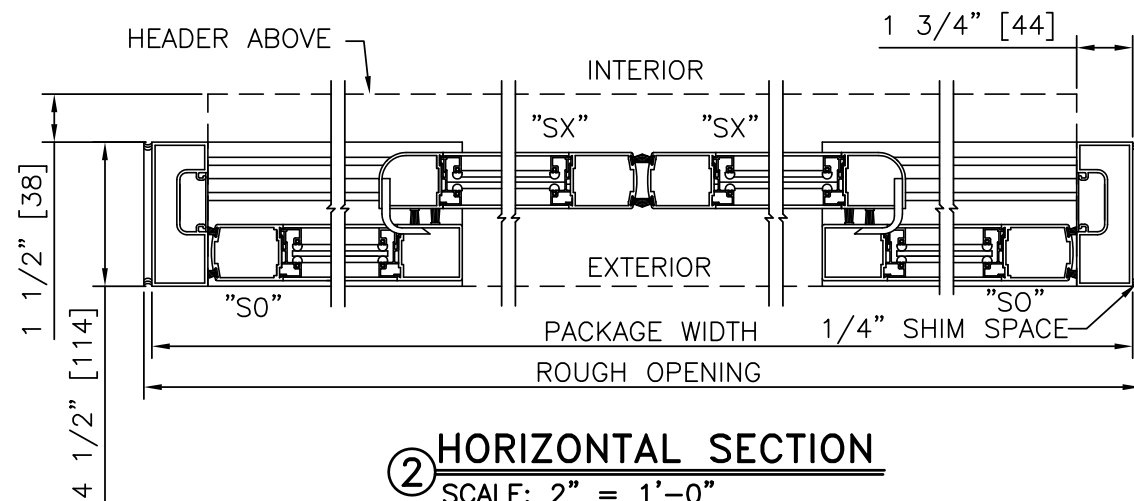
**ELEVATION VIEW**  
SCALE: 3/8" = 1'-0"



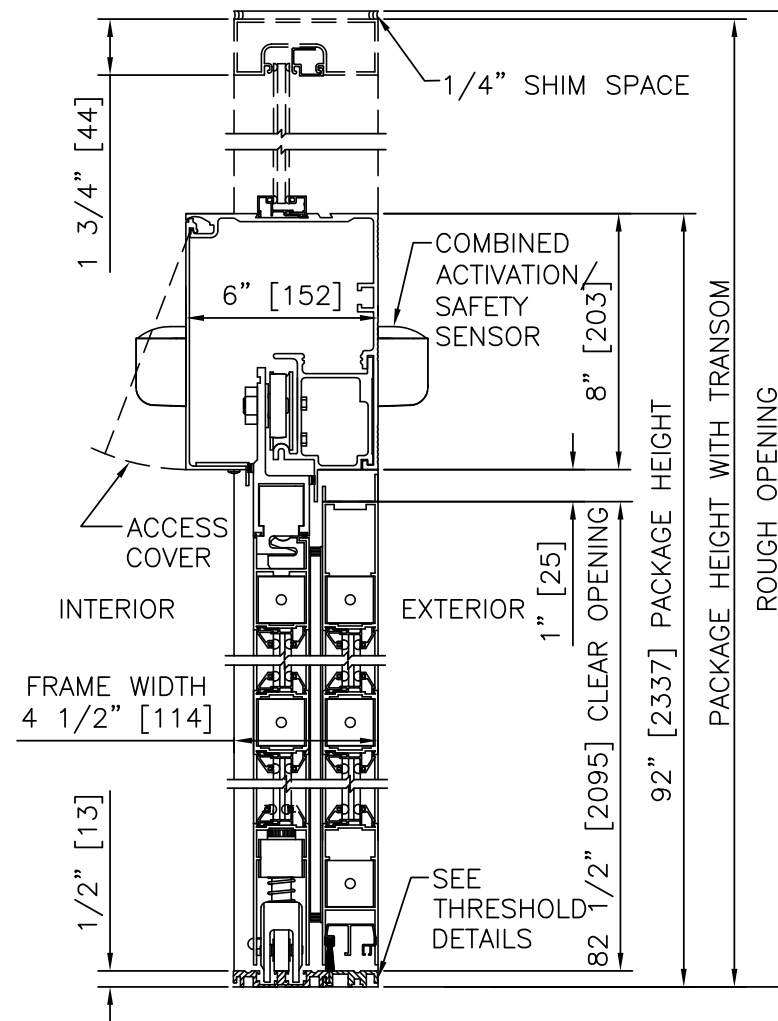
**PLAN VIEW**  
SCALE: 3/8" = 1'-0"

**NOTES**

1. ELECTRICAL REQUIREMENTS: 120 VAC, 5 AMP MIN TO POWER OPERATOR BY ELECTRICAL CONTRACTOR.
2. ROUGH OPENING SHALL PROVIDE 1/4"[6] SHIM SPACE ON SIDES AND TOP OF PACKAGE.
3. LIMITS OF ACTIVATION AND SAFETY ZONES ARE FOR REFERENCE ONLY; SEE ANSI/BHMA A156.10 FOR DETAILED REQUIREMENTS.
4. STANDARD LOCKING IS 2-POINT, 3-POINT AND ACCESS CONTROL SYSTEMS AVAILABLE. SEE SHEET 1.11.
5. STANDARD GLAZING STOPS FOR ALL PANELS ARE 1/4"[6]; 5/8"[16] AND 1"[25] AVAILABLE.
6. STANDARD JAMB TUBES SHOWN; 6"[152] AVAILABLE.
7. STANDARD STILES, BOTTOM RAILS AND MUNTINS SHOWN; MEDIUM STILES, BOTTOM RAILS TO 12"[305], AND 4 1/4"[108] MUNTINS AVAILABLE.
8. SEE SPECIFICATIONS FOR ADDITIONAL INFORMATION.



**HORIZONTAL SECTION**  
SCALE: 2" = 1'-0"



**VERTICAL SECTION**  
SCALE: 2" = 1'-0"

**PRODUCT OPTIONS**

- TRANSOM**
- YES
  - VERTICALS 1 2 3
- FINISH**
- ANODIZED CLEAR CL2
  - ANODIZED DK BRONZE
  - CUSTOM
- LOCKING**
- 2-POINT
  - 3-POINT
  - ACCESS CONTROL (PANIC)
- STILES**
- NARROW
  - MEDIUM
- BOTTOM RAILS**
- STANDARD 4"
  - OPTIONAL 6" 8" 10" 12"
- THRESHOLDS**
- SQ/BVL (EXT)
  - SQ/BVL (INT)
  - DBL BVL
  - RECESSED
- ACTIVATION/SAFETY**
- 2 COMBINED ACTIVATION/SAFETY SENSORS
- OTHER OPTIONS**
- ROTARY CTRL SWITCH
  - KEYED
  - UNINTERRUPTIBLE POWER SUPPLY
  - FLY OPEN BOX
  - WIND DAMPERS
  - PANEL CLOSERS
  - ALARM CONTACTS
  - CLEAN ROOM (CL 1)

**BI-PART FORMULAS - NARROW STILE**  
 PACKAGE WIDTH = 2 X CLEAR DOOR OPENING + 23.4"  
 CLEAR DOOR OPENING = 1/2 PACKAGE WIDTH - 11.7"  
 EMERGENCY BREAKOUT WIDTH = PACKAGE WIDTH - 14.5"  
 DOOR PANEL WIDTH = 1/4 PACKAGE WIDTH + 0.3"

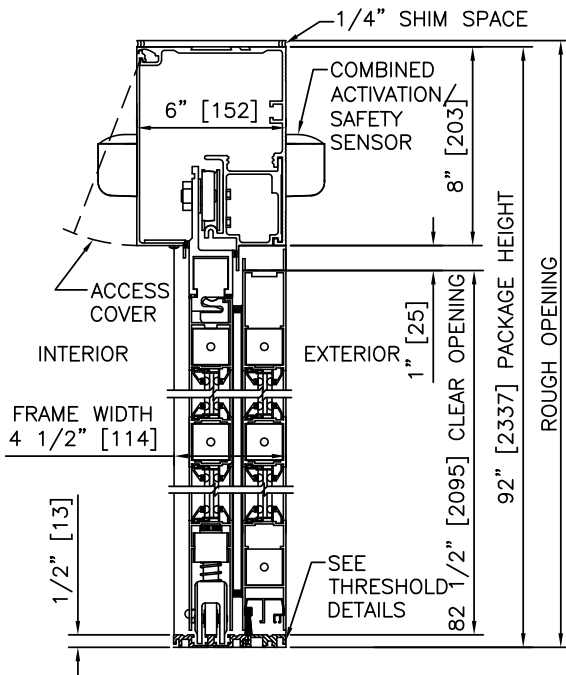
**BI-PART FORMULAS - MEDIUM STILE**  
 PACKAGE WIDTH = 2 X CLEAR DOOR OPENING + 32.1"  
 CLEAR DOOR OPENING = 1/2 PACKAGE WIDTH - 16.0"  
 EMERGENCY BREAKOUT WIDTH = PACKAGE WIDTH - 17.5"  
 DOOR PANEL WIDTH = 1/4 PACKAGE WIDTH + 1.1"

TYPICAL PACKAGE DIMENSIONS (NARROW STILE)			
PACKAGE WIDTH	NOMINAL CLEAR DOOR OPENING	DOOR PANEL NOMINAL WIDTH	EMERGENCY BREAKOUT NOM. WIDTH
120"	48.3"	30.3"	105.5"
144"	60.3"	36.3"	129.5"
168"	72.3"	42.3"	153.5"

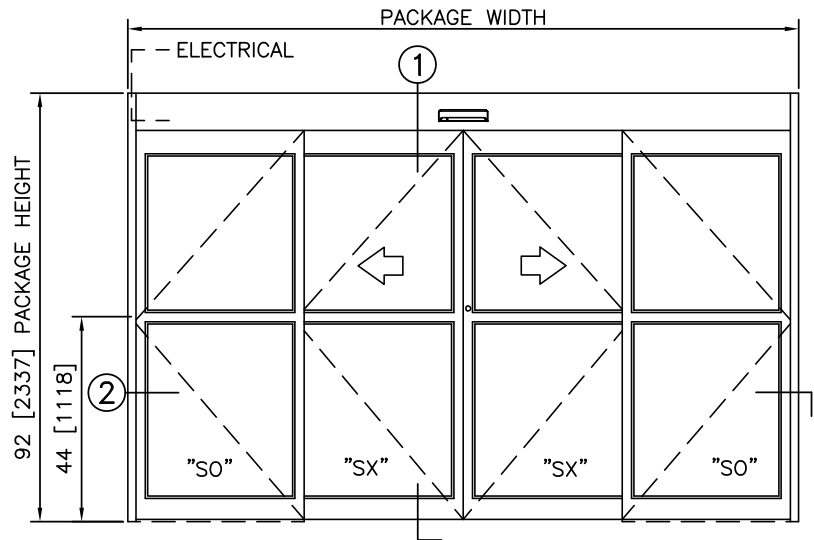
BI-PART WITH OPTIONAL TRANSOM

**DURA-GLIDE**  
**3000**  
**SERIES**

**STANLEY**  
Access Technologies



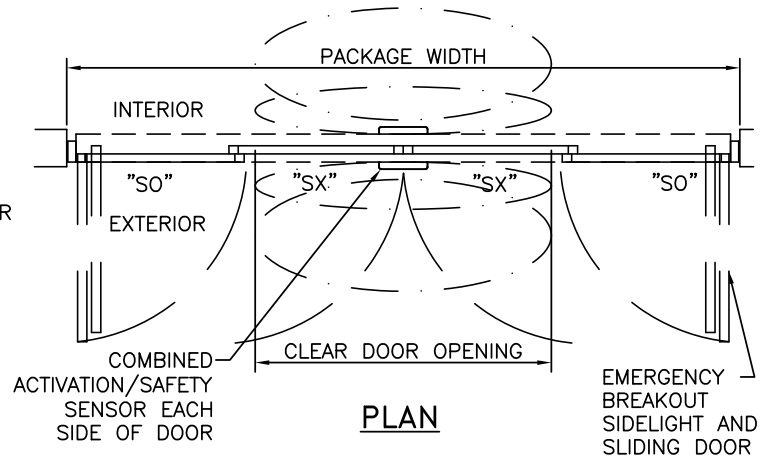
① VERTICAL SECTION



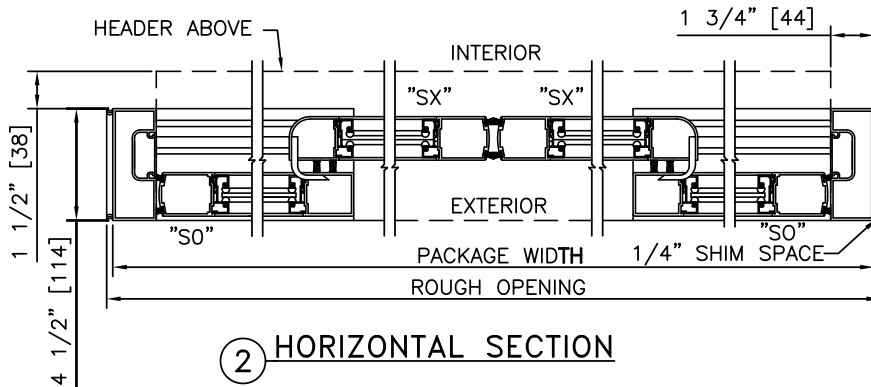
ELEVATION

**NOTES**

1. ELECTRICAL REQUIREMENTS: 120 VAC, 5 AMP MIN TO POWER OPERATOR BY ELECTRICAL CONTRACTOR.
2. ROUGH OPENING SHALL PROVIDE 1/4" [6] SHIM SPACE ON SIDES AND TOP OF PACKAGE.
3. LIMITS OF ACTIVATION AND SAFETY ZONES ARE FOR REFERENCE ONLY; SEE ANSI/BHMA A156.10 FOR DETAILED REQUIREMENTS.
4. SEE SPECIFICATIONS FOR ADDITIONAL INFORMATION.



PLAN



② HORIZONTAL SECTION

TYPICAL PACKAGE DIMENSIONS (NARROW STILE)			
PACKAGE WIDTH	NOMINAL CLEAR DOOR OPENING	DOOR PANEL NOMINAL WIDTH	EMERGENCY BREAKOUT NOM. WIDTH
120"	48.3"	30.3"	105.5"
144"	60.3"	36.3"	129.5"
168"	72.3"	42.3"	153.5"

**DURA-GLIDE  
3000  
SERIES**

BI-PARTING WITH TRANSOM

PROJECT INFORMATION

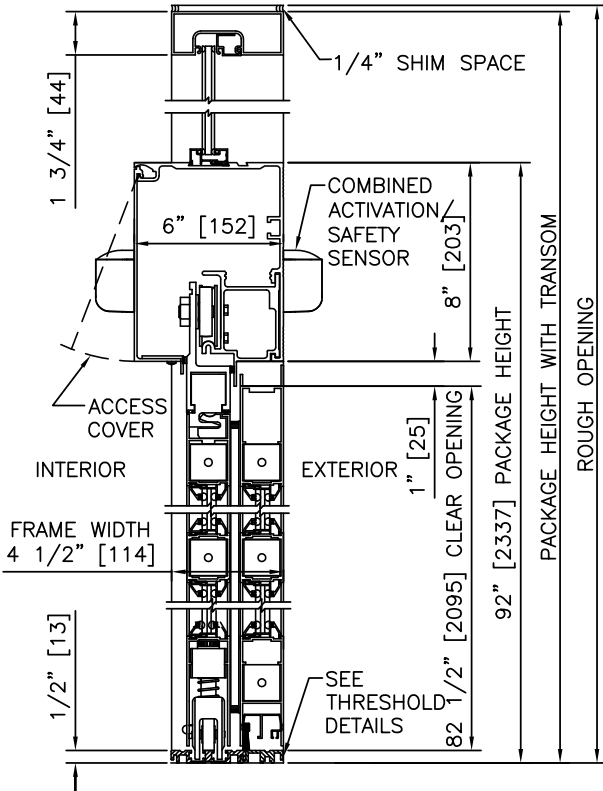
PROJECT NAME:

LOCATION:

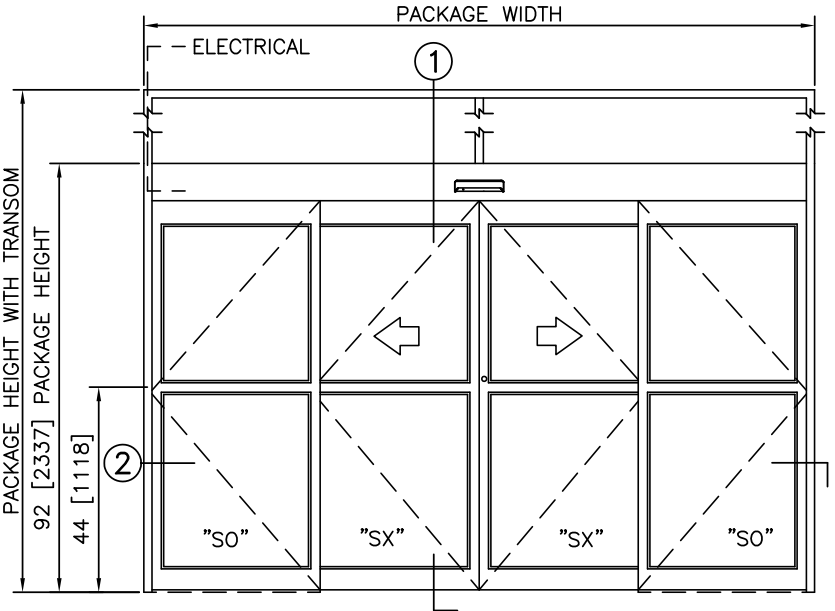
DOOR NUMBER(S):

DATE:

SHEET: OF



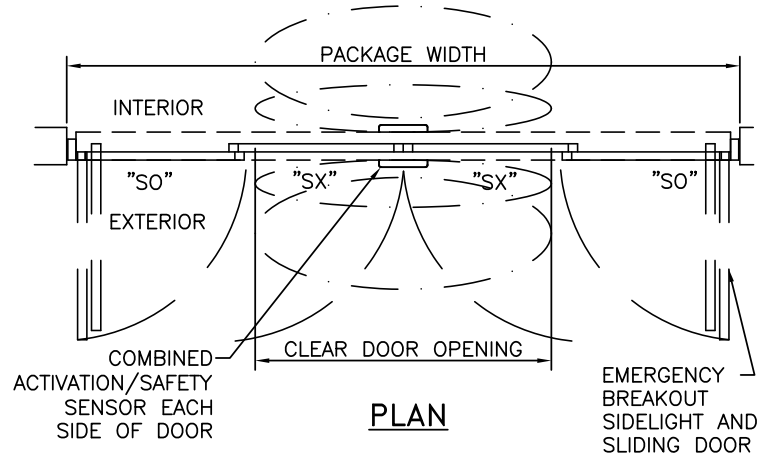
① VERTICAL SECTION



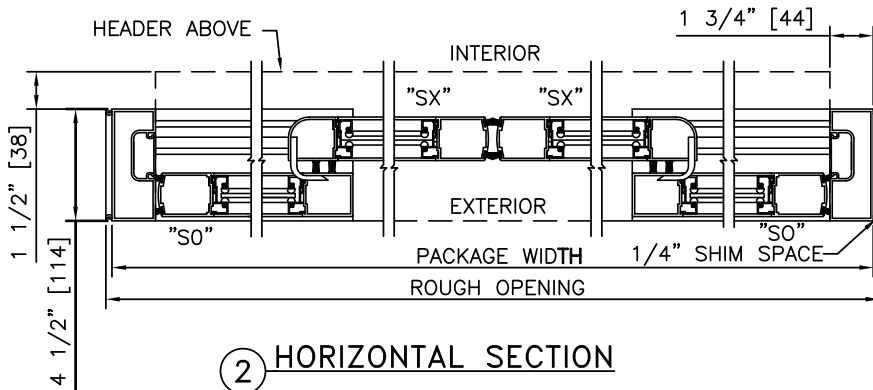
ELEVATION

**NOTES**

1. ELECTRICAL REQUIREMENTS: 120 VAC, 5 AMP MIN TO POWER OPERATOR BY ELECTRICAL CONTRACTOR.
2. ROUGH OPENING SHALL PROVIDE 1/4" [6] SHIM SPACE ON SIDES AND TOP OF PACKAGE.
3. LIMITS OF ACTIVATION AND SAFETY ZONES ARE FOR REFERENCE ONLY; SEE ANSI/BHMA A156.10 FOR DETAILED REQUIREMENTS.
4. SEE SPECIFICATIONS FOR ADDITIONAL INFORMATION.

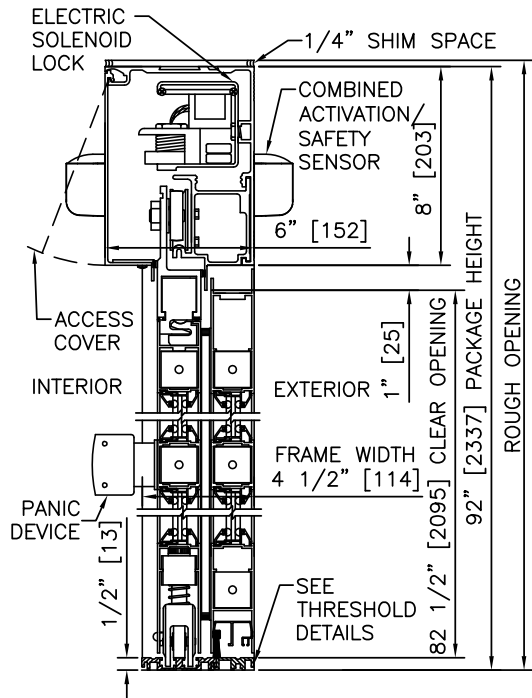


PLAN

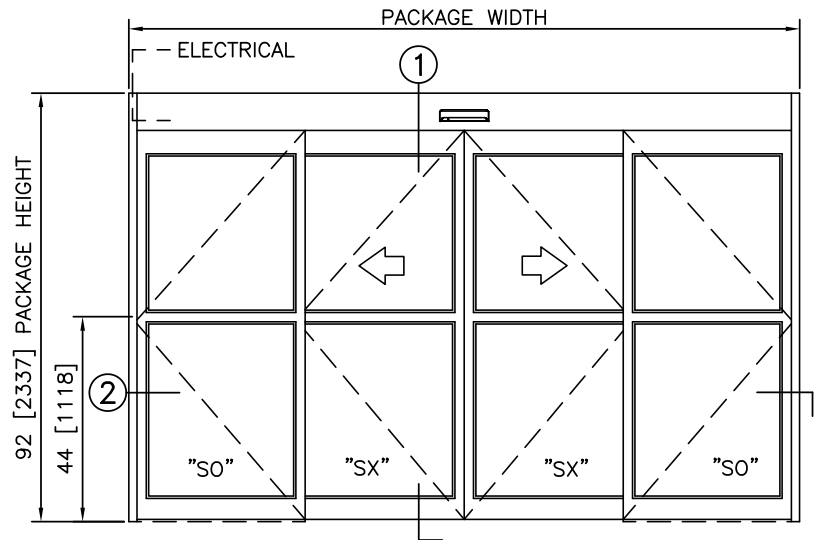


② HORIZONTAL SECTION

TYPICAL PACKAGE DIMENSIONS (NARROW STILE)			
PACKAGE WIDTH	NOMINAL CLEAR DOOR OPENING	DOOR PANEL NOMINAL WIDTH	EMERGENCY BREAKOUT NOM. WIDTH
120"	48.3"	30.3"	105.5"
144"	60.3"	36.3"	129.5"
168"	72.3"	42.3"	153.5"



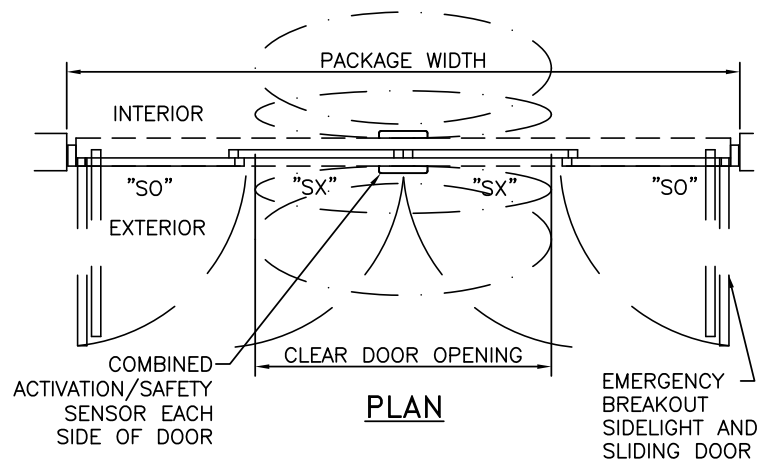
1 VERTICAL SECTION



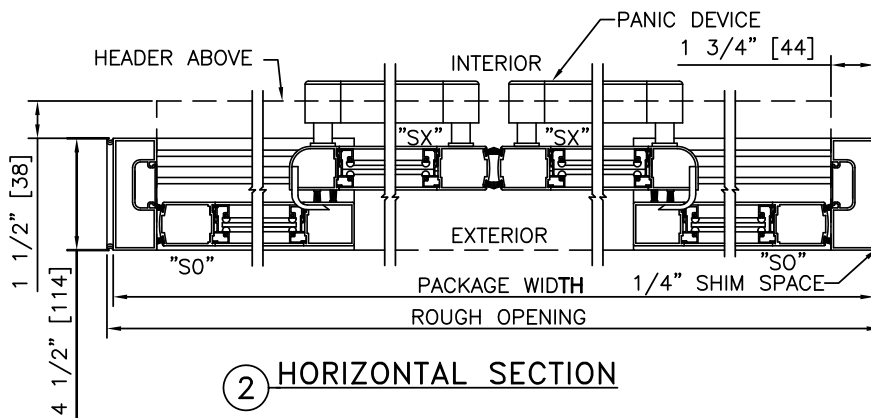
ELEVATION

**NOTES**

1. ELECTRICAL REQUIREMENTS: BY ELECTRICAL CONTRACTOR  
120 VAC, 5 AMP MIN TO POWER OPERATOR  
CONTROL CIRCUIT FROM SECURE ACTIVATION TO OPERATOR
2. ROUGH OPENING SHALL PROVIDE 1/4"[6] SHIM SPACE ON SIDES AND TOP OF PACKAGE.
3. LIMITS OF ACTIVATION AND SAFETY ZONES ARE FOR REFERENCE ONLY; SEE ANSI/BHMA A156.10 FOR DETAILED REQUIREMENTS.
4. SEE SPECIFICATIONS FOR ADDITIONAL INFORMATION.



PLAN



2 HORIZONTAL SECTION

TYPICAL PACKAGE DIMENSIONS (NARROW STILE)			
PACKAGE WIDTH	NOMINAL CLEAR DOOR OPENING	DOOR PANEL NOMINAL WIDTH	EMERGENCY BREAKOUT NOM. WIDTH
120"	48.3"	30.3"	105.5"
144"	60.3"	36.3"	129.5"
168"	72.3"	42.3"	153.5"

**DURA-GLIDE  
3000  
SERIES**

BI-PARTING WITH TRANSOM & ACCESS CONTROL, SURFACE

PROJECT INFORMATION

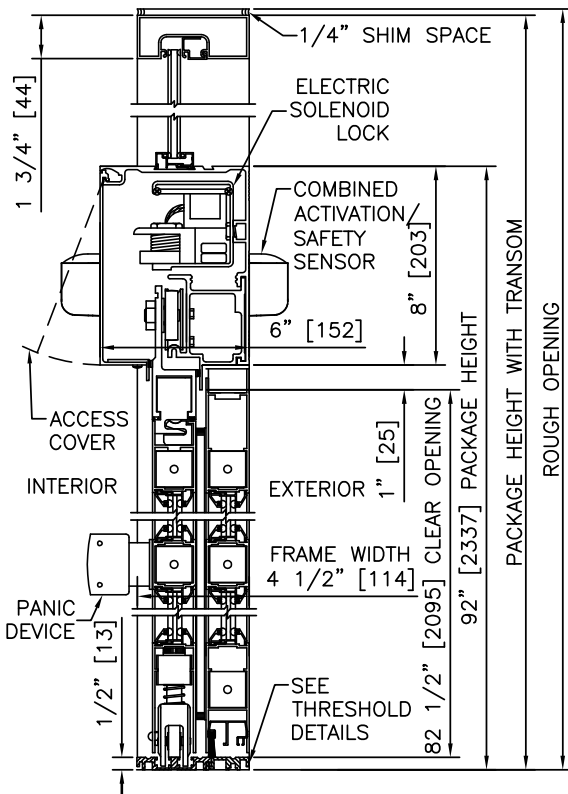
PROJECT NAME:

LOCATION:

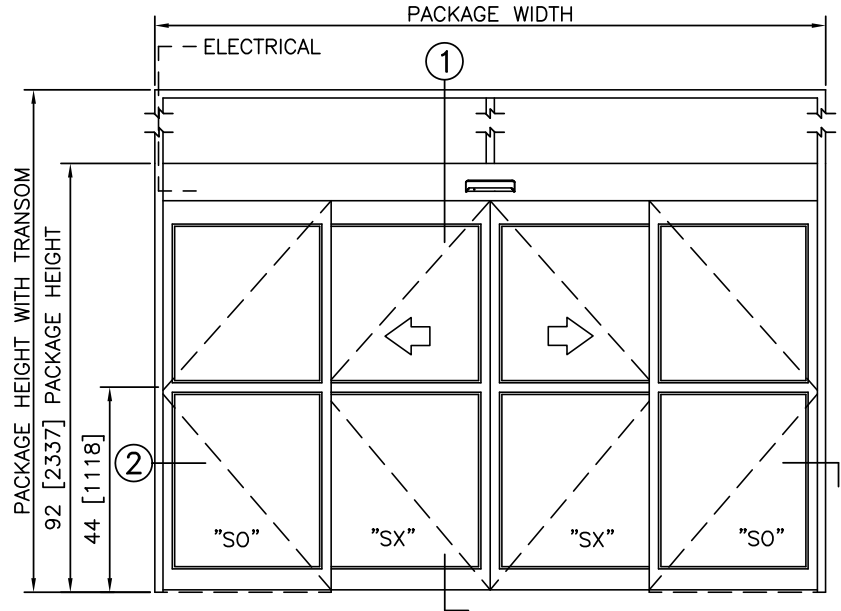
DOOR NUMBER(S):

DATE:

SHEET: OF

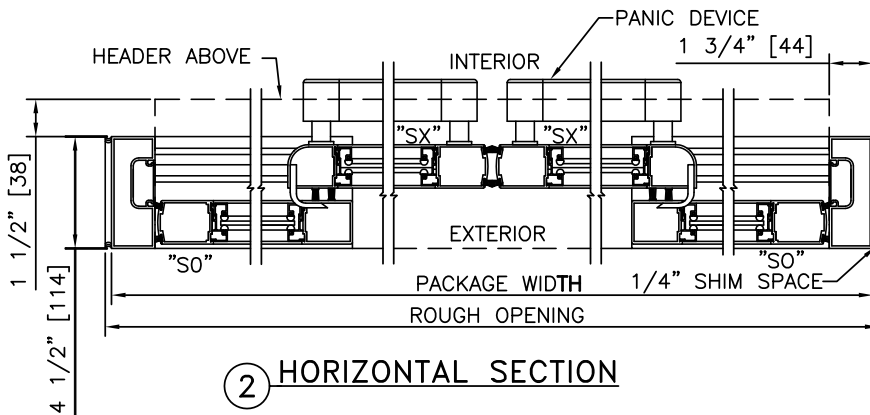
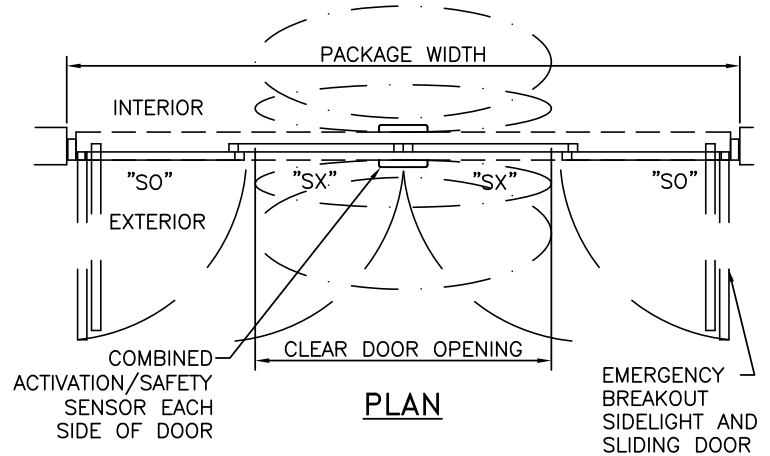


① VERTICAL SECTION



NOTES

1. ELECTRICAL REQUIREMENTS: BY ELECTRICAL CONTRACTOR  
120 VAC, 5 AMP MIN TO POWER OPERATOR  
CONTROL CIRCUIT FROM SECURE ACTIVATION TO OPERATOR
2. ROUGH OPENING SHALL PROVIDE 1/4"[6] SHIM SPACE ON SIDES AND TOP OF PACKAGE.
3. LIMITS OF ACTIVATION AND SAFETY ZONES ARE FOR REFERENCE ONLY; SEE ANSI/BHMA A156.10 FOR DETAILED REQUIREMENTS.
4. SEE SPECIFICATIONS FOR ADDITIONAL INFORMATION.



② HORIZONTAL SECTION

TYPICAL PACKAGE DIMENSIONS (NARROW STILE)			
PACKAGE WIDTH	NOMINAL CLEAR DOOR OPENING	DOOR PANEL NOMINAL WIDTH	EMERGENCY BREAKOUT NOM. WIDTH
120"	48.3"	30.3"	105.5"
144"	60.3"	36.3"	129.5"
168"	72.3"	42.3"	153.5"

**DURA-GLIDE  
3000  
SERIES**

BI-PARTING WITH ACCESS CONTROL, RECESSED

PROJECT INFORMATION

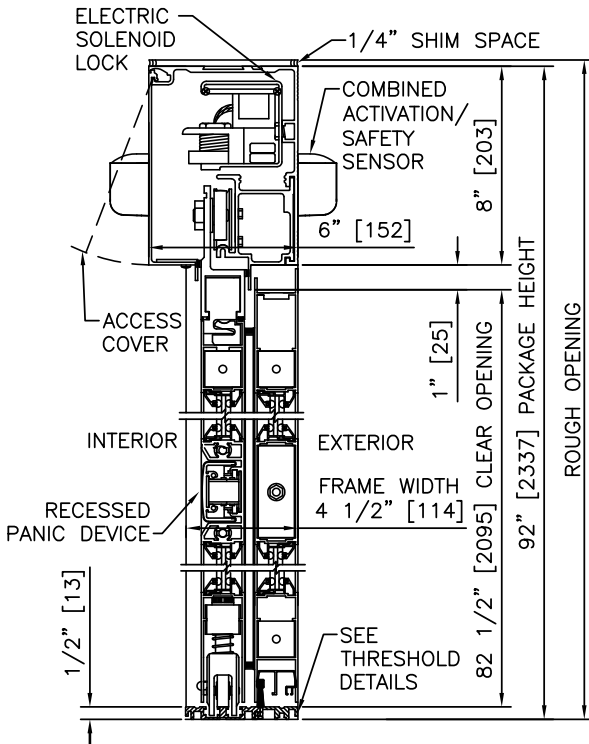
PROJECT NAME:

LOCATION:

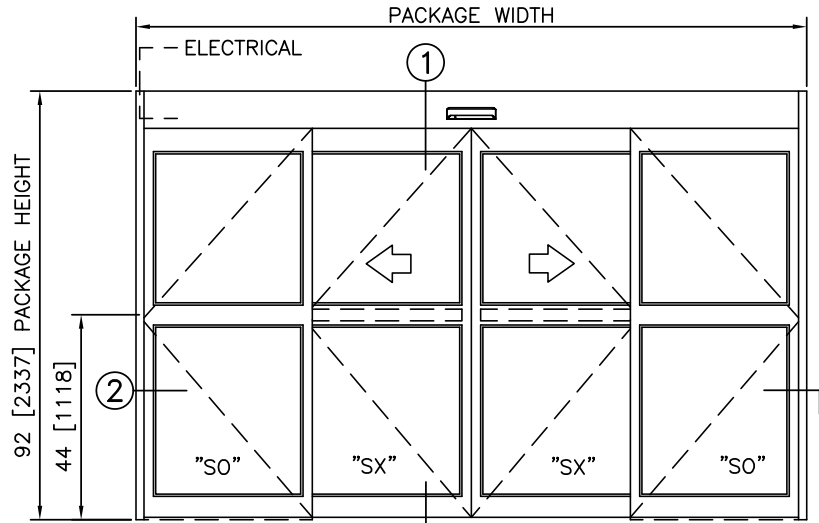
DOOR NUMBER(S):

DATE:

SHEET: OF



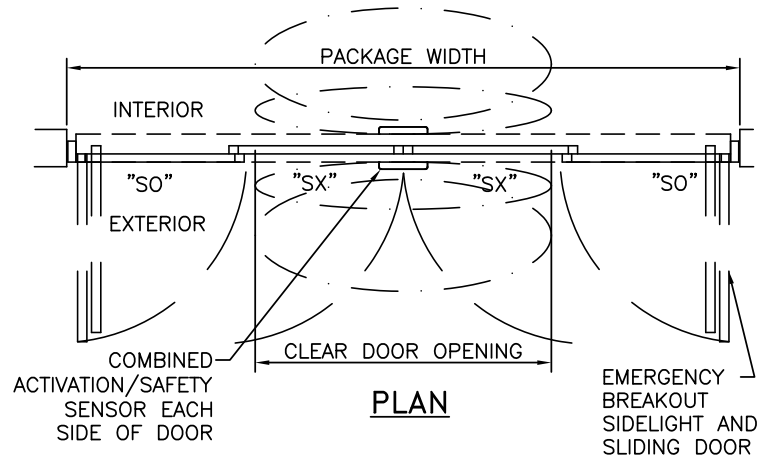
① VERTICAL SECTION



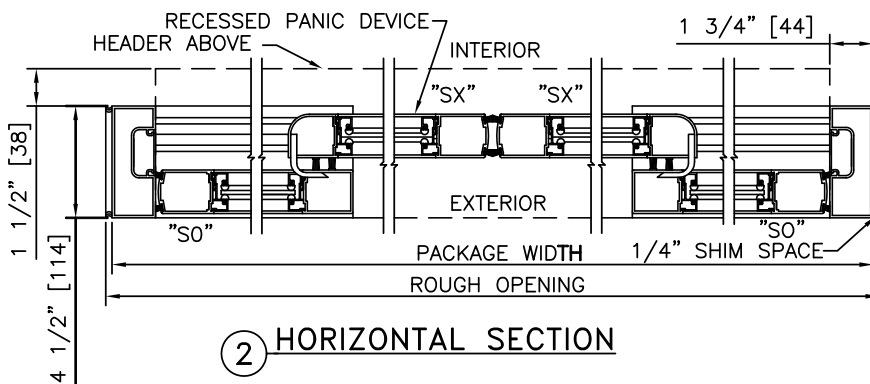
ELEVATION

NOTES

1. ELECTRICAL REQUIREMENTS: BY ELECTRICAL CONTRACTOR  
120 VAC, 5 AMP MIN TO POWER OPERATOR  
CONTROL CIRCUIT FROM SECURE ACTIVATION TO OPERATOR
2. ROUGH OPENING SHALL PROVIDE 1/4"[6] SHIM SPACE ON SIDES AND TOP OF PACKAGE.
3. LIMITS OF ACTIVATION AND SAFETY ZONES ARE FOR REFERENCE ONLY; SEE ANSI/BHMA A156.10 FOR DETAILED REQUIREMENTS.
4. SEE SPECIFICATIONS FOR ADDITIONAL INFORMATION.



PLAN



② HORIZONTAL SECTION

TYPICAL PACKAGE DIMENSIONS (NARROW STILE)			
PACKAGE WIDTH	NOMINAL CLEAR DOOR OPENING	DOOR PANEL NOMINAL WIDTH	EMERGENCY BREAKOUT NOM. WIDTH
120"	48.3"	30.3"	105.5"
144"	60.3"	36.3"	129.5"
168"	72.3"	42.3"	153.5"

**DURA-GLIDE  
3000  
SERIES**

BI-PARTING WITH TRANSOM & ACCESS CONTROL, RECESSED

PROJECT INFORMATION

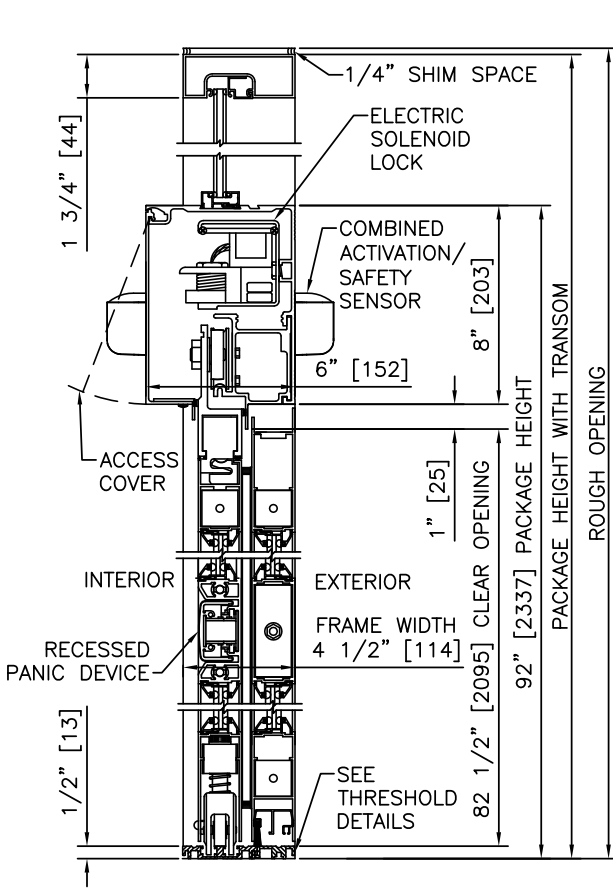
PROJECT NAME:

LOCATION:

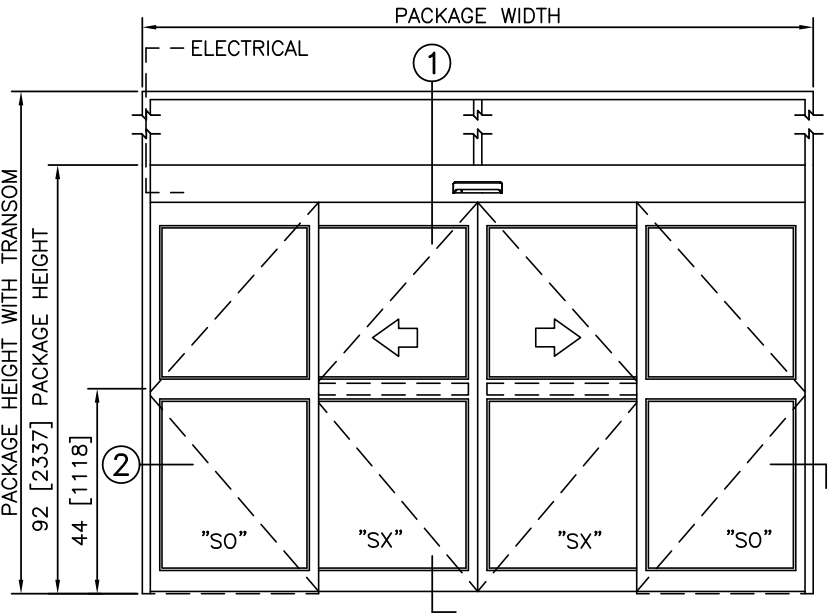
DOOR NUMBER(S):

DATE:

SHEET: OF



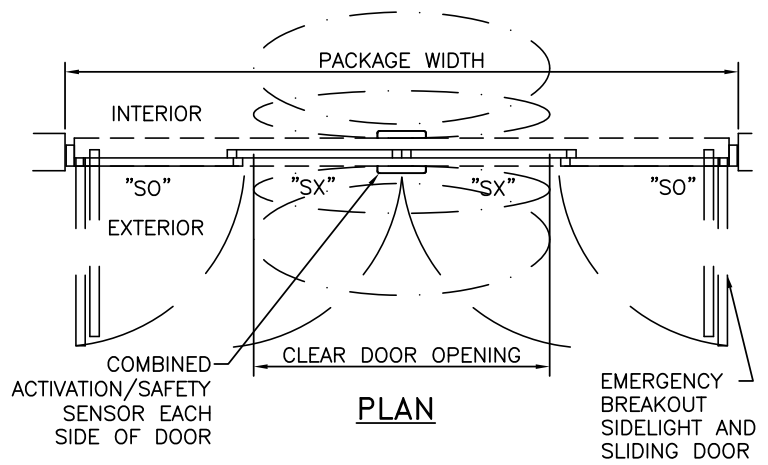
1 VERTICAL SECTION



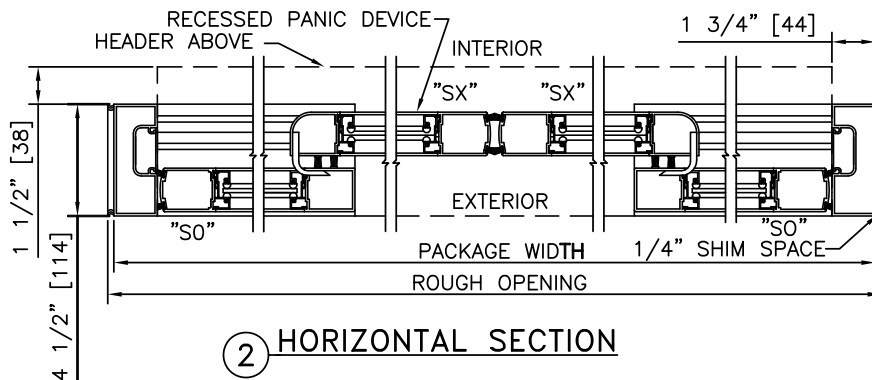
ELEVATION

NOTES

1. ELECTRICAL REQUIREMENTS: BY ELECTRICAL CONTRACTOR  
120 VAC, 5 AMP MIN TO POWER OPERATOR  
CONTROL CIRCUIT FROM SECURE ACTIVATION TO OPERATOR
2. ROUGH OPENING SHALL PROVIDE 1/4\" [6] SHIM SPACE ON SIDES AND TOP OF PACKAGE.
3. LIMITS OF ACTIVATION AND SAFETY ZONES ARE FOR REFERENCE ONLY; SEE ANSI/BHMA A156.10 FOR DETAILED REQUIREMENTS.
4. SEE SPECIFICATIONS FOR ADDITIONAL INFORMATION.



PLAN



2 HORIZONTAL SECTION

TYPICAL PACKAGE DIMENSIONS (NARROW STILE)			
PACKAGE WIDTH	NOMINAL CLEAR DOOR OPENING	DOOR PANEL NOMINAL WIDTH	EMERGENCY BREAKOUT NOM. WIDTH
120"	48.3"	30.3"	105.5"
144"	60.3"	36.3"	129.5"
168"	72.3"	42.3"	153.5"